

# Chronic Kidney Disease and Mortality Risk: A Systematic Review

Marcello Tonelli,<sup>\*,†,§</sup> Natasha Wiebe,<sup>\*</sup> Bruce Culleton,<sup>||</sup> Andrew House,<sup>¶</sup> Chris Rabbat,<sup>††</sup> Mei Fok,<sup>\*</sup> Finlay McAlister,<sup>\*,†,§</sup> and Amit X. Garg<sup>¶,\*\*\*</sup>

Departments of <sup>\*</sup>Medicine, <sup>†</sup>Critical Care, and <sup>‡</sup>Public Health Sciences, University of Alberta, and <sup>§</sup>Institute of Health Economics, Edmonton, and <sup>||</sup>Department of Medicine, University of Calgary, Calgary, Alberta, and Departments of <sup>¶</sup>Medicine and <sup>\*\*</sup>Epidemiology and Biostatistics, University of Western Ontario, London, and <sup>††</sup>Department of Medicine, McMaster University, Hamilton, Ontario, Canada

Current guidelines identify people with chronic kidney disease (CKD) as being at high risk for cardiovascular and all-cause mortality. Because as many as 19 million Americans may have CKD, a comprehensive summary of this risk would be potentially useful for planning public health policy. A systematic review of the association between non-dialysis-dependent CKD and the risk for all-cause and cardiovascular mortality was conducted. Patient- and study-related characteristics that influenced the magnitude of these associations also were investigated. MEDLINE and EMBASE databases were searched, and reference lists through December 2004 were consulted. Authors of 10 primary studies provided additional data. Cohort studies or cohort analyses of randomized, controlled trials that compared mortality between those with and without chronically reduced kidney function were included. Studies were excluded from review when participants were followed for <1 yr or had ESRD. Two reviewers independently extracted data on study setting, quality, participant and renal function characteristics, and outcomes. Thirty-nine studies that followed a total of 1,371,990 participants were reviewed. The unadjusted relative risk for mortality in participants with reduced kidney function compared with those without ranged from 0.94 to 5.0 and was significantly more than 1.0 in 93% of cohorts. Among the 16 studies that provided suitable data, the absolute risk for death increased exponentially with decreasing renal function. Fourteen cohorts described the risk for mortality from reduced kidney function, after adjustment for other established risk factors. Although adjusted relative hazards were consistently lower than unadjusted relative risks (median reduction 17%), they remained significantly more than 1.0 in 71% of cohorts. This review supports current guidelines that identify individuals with CKD as being at high risk for cardiovascular mortality. Determining which interventions best offset this risk remains a health priority.

*J Am Soc Nephrol* ●●: ●●●–●●●, ●●●●. doi: 10.1681/ASN.2005101085

It has been known for many years that ESRD is associated with very high mortality and accelerated cardiovascular disease (1). Several recent studies suggest that the risk for death is increased independently in individuals who have less severe impairment of kidney function and are not dialysis dependent, compared with those who have preserved kidney function (2,3). However, other rigorously conducted studies have found little or no significant increase in all-cause or cardiovascular mortality in the setting of mild to moderate chronic kidney disease (CKD) (4,5). Even among studies that have demonstrated higher mortality rates in people with CKD, the magnitude of the increased risk has varied substantially for reasons that are unclear.

Current guidelines identify individuals with CKD as being at high risk for cardiovascular disease and other adverse outcomes (6). Because non-dialysis-dependent CKD may affect as

many as 19 million Americans (7), a summary of the risk for all-cause and cardiovascular mortality associated with this condition potentially would be useful to decision-makers and researchers. In addition, identification of factors that modify the strength of the relation between CKD and adverse outcomes may help to improve the current understanding of how impaired kidney function leads to higher risk.

Despite considerable interest in this topic, previous summaries of the available evidence have been presented predominantly as narrative reviews, which have widely known limitations (8,9). Therefore, we conducted a systematic review to evaluate the association between non-dialysis-dependent CKD and the risk for all-cause and cardiovascular mortality. We also sought to determine patient- and study-related characteristics that influenced the magnitude of these associations.

## Materials and Methods

### Search Strategy

Two reviewers searched Medline (1969 to 2004) and EMBASE (1988 to 2004) and the reference lists of primary studies, review articles, and clinical practice guidelines independently and in duplicate. The search strategies were created with the assistance of a research librarian and were not restricted to the English language (Appendixes A and B). Any

Received October 18, 2005. Accepted April 20, 2006.

Published online ahead of print. Publication date available at [www.jasn.org](http://www.jasn.org).

**Address correspondence to:** Dr. Finlay McAlister, University of Alberta, Department of Medicine, 8440 112 Street, Edmonton, Alberta T6B 2B7, Canada. Phone: 780-407-1399; Fax: 780-407-2680; E-mail: [finlay.mcalister@ualberta.ca](mailto:finlay.mcalister@ualberta.ca)

Table 1. Characteristics of included studies<sup>a</sup>

First Author/ Study Name, Year of Publication	Design; Data; Country(ies)	Inclusion Criteria	No. of Patients	Median Duration (Yr)	Mean Age (Yr)	% Male	% Population			Definition of Reduced Kidney Function <sup>b</sup>
							CVD	HTN	Diabetes	
ALLHAT 2005 (47)	RCT; ALLHAT; US, Canada, Puerto Rico, US Virgin Islands	Age $\geq$ 55 yr, HTN, $\geq$ 1 other CV risk factor	31,897	4.9 <sup>c</sup>	67	54	26	100	36	GFR <60 ml/min
ARIC 2003 (42)	P-CS; ARIC; US	General population, age 45 to 64 yr	15,350	6.2 <sup>c</sup>	54 (all 45 to 64)	45	5	35	12	GFR <60 ml/min
BRHS 1997 (54)	P-CS; British Regional Heart Study; UK	General population; men aged 40 to 59 yr	7690	14.8	50	100	—	—	41	SCr $\geq$ 116 $\mu$ mol/L
Bruno 2003 (36)	P-CS; Casale Monferrato; Italy	General population, type 2 diabetes	1540	10.0 <sup>d</sup>	68	44	—	84	100	SCr >133 $\mu$ mol/L
CARE 1996 (44)	RCT; CARE; US, Canada	Age 21 to 75 yr, previous MI	4159	5.0	59	86	100	42	14	GFR <60 ml/min
CHS 2003 (15)	P-CS; CHS; US	General population, age $\geq$ 65 yr	4893	4.5	73 (all $\geq$ 65)	45	20	42	22	GFR <60 ml/min
DIG 2004 (17)	RCT; DIG; US, Canada	CHF or EF <35%	6800	1.0 <sup>c</sup>	64	77	100	45	28	GFR $\leq$ 60 ml/min
Ezekowitz 2004 (38)	R-CS; APPROACH and BC Cardiac Registry; Canada	CHF + CAD on coronary angiogram	6427	1.0 <sup>d</sup>	69	65	100	39	21	CrCl <60 ml/min
FHS 1999 (4)	P-CS; Framingham Heart Study; US	General population	2837 M 3386 W	11.0 <sup>c</sup> M 11.6 <sup>c</sup> W	53 M 55 W	100 M 0 W	14 M 10 W	30 M 25 W	30 M 25 W	SCr $\geq$ 136 $\mu$ mol/L M SCr $\geq$ 120 $\mu$ mol/L W
Friedman 1991 (39)	P-CS; Waikato Hospital; New Zealand	Age $\geq$ 60 yr with acute stroke	492	1.5 <sup>c</sup>	75 (all >60)	51	100	—	—	SCr $\geq$ 120 $\mu$ mol/L
Go 2004 (2)	R-CS; Kaiser Permanente Renal Registry; US	General population, age $\geq$ 20 yr (treated at a single HMO)	1,118,922	2.8	52	45	6	19	10	GFR <60 ml/min
HDFP 1989 (50)	RCT; HDFP; US	Age 30–69 yr, HTN	10,768	8.0 <sup>d</sup>	51 (all 30 to 69)	54	—	100	10	SCr $\geq$ 151 $\mu$ mol/L
HERS 2001 (18)	RCT; HERS; US	Postmenopausal women, age $\geq$ 55 yr	2761	4.1 <sup>c</sup>	67 (all <80)	0	100	59	23	CrCl $\leq$ 60 ml/min
HOORN 2002 (20)	P-CS; HOORN; The Netherlands	General population, age 50 to 75 yr	608	8.7	64	48	24	55	27	GFR $\leq$ 63 ml/min
HOPE 2001 (43)	RCT; HOPE; US	Age $\geq$ 55 yr; known CVD or diabetes, $\geq$ 1 other CV risk factor	9287	4.5	66	73	100	47	38	CrCl $\leq$ 65 ml/min
HOT 2001 (3)	RCT; HOT; 26 countries	Age 50 to 80 yr, HTN	18,597	3.8 <sup>c</sup>	61	53	—	100	8	CrCl $\leq$ 60 ml/min
Hoy 2001 (14)	P-CS; Renal Disease Screening Program; Australia	General population, age $\geq$ 20 yr (predominantly Aboriginal)	786	5.7 <sup>c</sup>	34	52	—	17	10	GFR <60 ml/min
HPS 2003 (56)	RCT; Heart Protection Study; UK	Age 40 to 80 yr; diabetes, HTN, or known CVD	20,536	4.6 <sup>c</sup>	64	75	85	41	29	SCr $\geq$ 130 $\mu$ mol/L M SCr $\geq$ 110 $\mu$ mol/L W
Laville 1994 (40)	R-CS; Yalgado Ouedraogo National Hospital; Burkina Faso	Adults, HTN	317	2.0 <sup>d</sup>	49	62	—	100	5	SCr >150 $\mu$ mol/L
LIPID 1998 (48)	RCT; LIPID; Australia, New Zealand	Age 31 to 75 yr, known CAD	8987	6.1 <sup>c</sup>	62	83	100	41	9	GFR <60 ml/min
Madsen 1994 (41)	P-CS; Hvidovre Hospital; Denmark	Age <76 yr, CHF	190	2.0 <sup>d</sup>	64 (all <76)	72	100	11	—	SCr >121 $\mu$ mol/L

Table 1. Continued

First Author/ Study Name, Year of Publication	Design; Data; Country(ies)	Inclusion Criteria	No. of Patients	Median Duration (Yr)	Mean Age (Yr)	% Male	% Population			Definition of Reduced Kidney Function <sup>b</sup>
							CVD	HTN	Diabetes	
McAlister 2004 (22)	P-CS; University of Alberta Heart Function Clinic; Canada	Adults, CHF	754	2.5	67	66	100	32	23	CrCl <60 ml/min
McClellan 2002 (23)	R-CS; Medicare Medical Information System; US	Adult Medicare beneficiaries, CHF	665	1.0 <sup>d</sup>	76	40	100	66	44	SCr >133 μmol/L M SCr >124 μmol/L W
Moreno 2003 (35)	R-CS; Spain	Adult, liver transplant recipients	397	5.6 <sup>c</sup>	—	—	—	—	—	SCr >115 μmol/L
Muntwyler 2002 (45)	P-CS; Eur. Improvement of HF Survey; Switzerland	Adults, CHF	411	1.4 <sup>c</sup>	75	56	100	20	18	SCr >120 μmol/L
NHANES I 2002 (5)	P-CS; NHANES I; US	General population, age 25 to 74 yr	2352	16.1 <sup>c</sup>	—	47	—	43	4	SCr ≥122 μmol/L M SCr ≥104 μmol/L W
NHANES II 2002 (16)	P-CS; NHANES II; US	General population, age 30 to 74 yr	6453	14.0	50	55	16	—	5	GFR <70 ml/min
NHCP 2005 (24)	R-CS; National Heart Care Project; US	Adults, CHF	53,640	1.0 <sup>d</sup>	79	42	100	64	40	SCr >133 μmol/L
POSCH 1993 (21)	RCT; POSCH; US	Age 30 to 64 yr, previous MI and dyslipidemia	416	7.0 <sup>d</sup>	51	92	100	0	0	SCr ≥115 μmol/L
PRIME II 2000 (13)	RCT; PRIME II; The Netherlands	Age 18 to 80 yr, CHF	1906	0.8	65	80	100	6	21	GFR ≤59 ml/min
Pulignano 2002 (55)	R-CS; IN-CHF Registry; Italy	Adults, CHF	1162 <70 523 ≥70	1.0 <sup>d</sup>	58 <70 75 ≥70	79 <70 65 ≥70	100	9 <70 9 ≥70	—	SCr ≥221 μmol/L
Schillaci 2001 (49)	P-CS; Progetto Ipertensione Umbria Monitoraggio Ambulatoriale; Italy	Adults, HTN	1829	4.0 <sup>c</sup>	51	54	0	100	7	SCr ≥103 μmol/L M SCr ≥84 μmol/L W
SHEP 1998 (46)	RCT; SHEP; Italy	Adults, systolic HTN	4336	5.0 <sup>d</sup>	72	43	—	100	10	SCr ≥119 μmol/L
Sihvonen 2004 (51)	P-CS; Tampere; Finland	Adults, RA and contemporaneous controls	604 RA 457 Ctr	11.0 <sup>d</sup>	59 RA 58 Ctr	22 RA 23 Ctr	—	—	—	SCr ≥115 μmol/L M SCr ≥110 μmol/L W
SOLVD 2000 (37)	RCT; SOLVD; US	Adults, CHF, EF <35	3673 P 2161 T	—	59 P 61 T	89 P 81 T	100	37 P 40 T	15 P 25 T	CrCl <60 ml/min
Syst-China 2001 (25)	RCT; Syst-China; China	Age ≥60 yr, HTN	2394	3.0	67	64	10	100	4	SCr ≥133 μmol/L
Syst-EUR 2002 (19)	RCT; Syst-EUR; The Netherlands	Age ≥60 yr, HTN	4688	2.0	70 (all ≥60)	33	30	100	10	SCr ≥101 μmol/L
VA-HIT 2004 (52)	RCT; VA-HIT; US	Men <74 yr, previous MI, dyslipidemia	2505	—	64	100	100	57	30	CrCl ≤75 ml/min
WOSCOPS 1995 (53)	P-RC; WOSCOPS; UK	Men 45 to 64 yr, dyslipidemia, multiple CV risk factors	6591	4.9 <sup>c</sup>	55	100	100	16	1	GFR <60 ml/min

<sup>a</sup>CAD, coronary artery disease; CHF, chronic heart failure; CrCl, creatinine clearance; Ctr, control; CV, cardiovascular; CVD, cardiovascular disease; EF, ejection fraction; HMO, health maintenance organization; HTN, hypertension; M, men; MI, myocardial infarction; P, prevention; P-CS, prospective cohort study; RA, rheumatoid arthritis; R-CS, retrospective cohort study; RCT, randomized controlled trial; SCr, serum creatinine; T, treatment; W, women.

<sup>b</sup>Definition chosen by review authors.

<sup>c</sup>Mean duration of follow-up (rather than median).

<sup>d</sup>Fixed duration of follow-up.

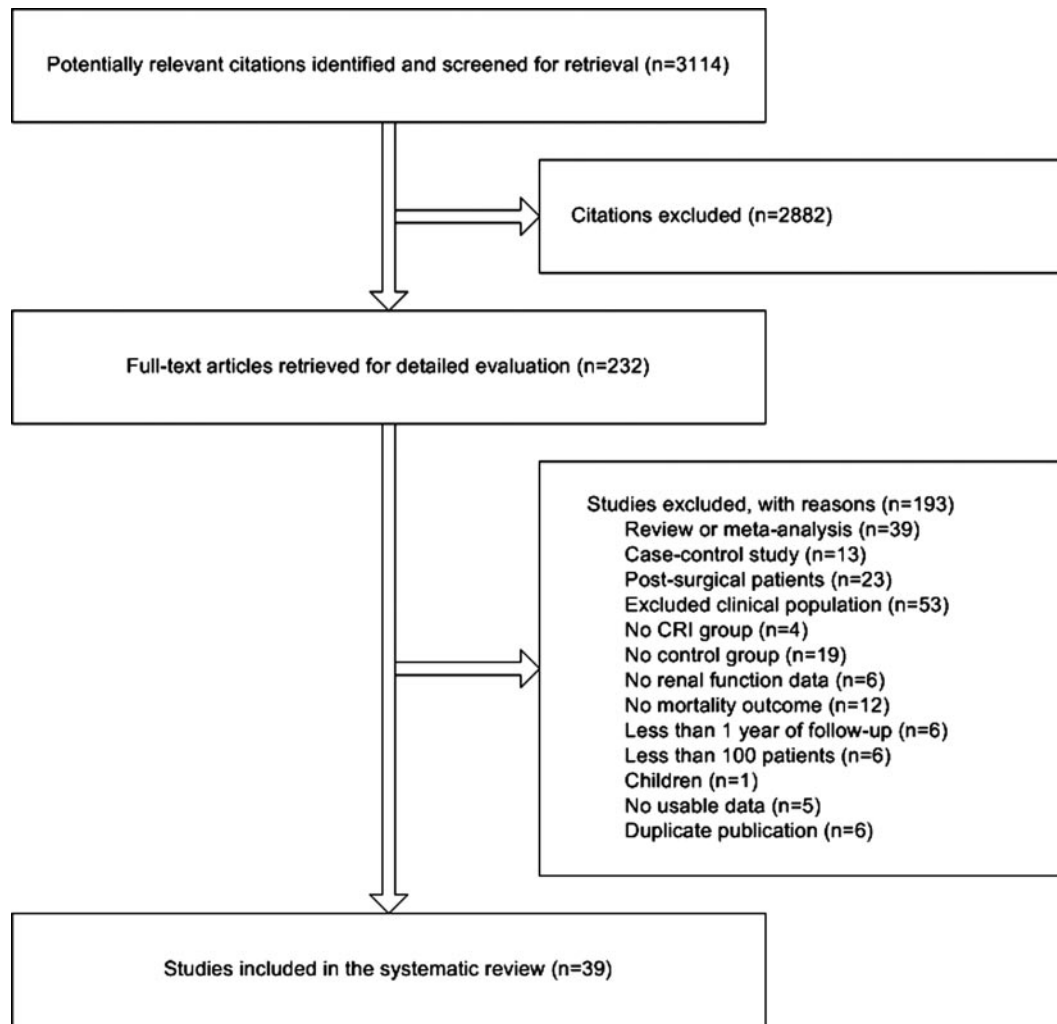


Figure 1. Flow diagram of studies that were considered for inclusion.

study that was deemed potentially relevant by one or more reviewers was retrieved for inspection.

### Study Selection

The search strategy and data extraction were defined by a prospective protocol. Studies were eligible for inclusion when they studied adults and contained data that permitted comparison of long-term (>1 yr) cardiovascular mortality or all-cause mortality between those with and without kidney disease (defined by abnormal GFR, creatinine clearance [CrCl], or serum creatinine [SCr] levels). Studies were excluded when they were published in abstract only, included data from patients with acute renal failure (or included people who were at high risk for acute renal failure, *e.g.*, those with acute myocardial infarction), or included patients who had ESRD and were on dialysis or received a renal transplant. Finally, meta-analyses, case-control studies, studies with <100 subjects, studies without a contemporaneous control group drawn from the same population, and studies that did not report the outcomes of interest were excluded.

### Validity Assessment and Data Extraction

We assessed criteria that can influence study validity (10). A study was described as retrospective when the initiation of the study occurred after both the exposures and the outcomes of interest occurred (11).

When multiple publications from the same group were found, the studies were reviewed carefully to ensure that no data were analyzed in duplicate. Data were extracted into a database and checked for accuracy by a second reviewer. When data were reported in strata, the data were extracted as separate cohorts. The following data were extracted from each included study: design, definition of CKD, age, gender, baseline renal function, clinical subpopulation (heart failure, known cardiovascular disease, hypertension, general population, and other), cardiovascular risk factors other than CKD (hypertension, smoking, diabetes, BP, LDL cholesterol, and body mass index), proteinuria, medication use (angiotensin-converting enzyme inhibitors, aspirin,  $\beta$  blockers, and statins), and mortality (all-cause and cardiovascular). When included studies did not report data that permitted construction of a two-by-two table (mortality by CKD status), additional information was requested from the authors.

### Definitions of Kidney Function and Kidney Disease

When possible, we used estimates of kidney function that were derived from estimating equations that are based on SCr, age, and/or race and gender rather than SCr alone. We defined CKD as present when estimated CrCl or GFR was <60 ml/min (with or without standardization to body surface area) or when SCr was >120  $\mu\text{mol/L}$  (>1.3 mg/dl) when data from estimating equations were unavailable. All-

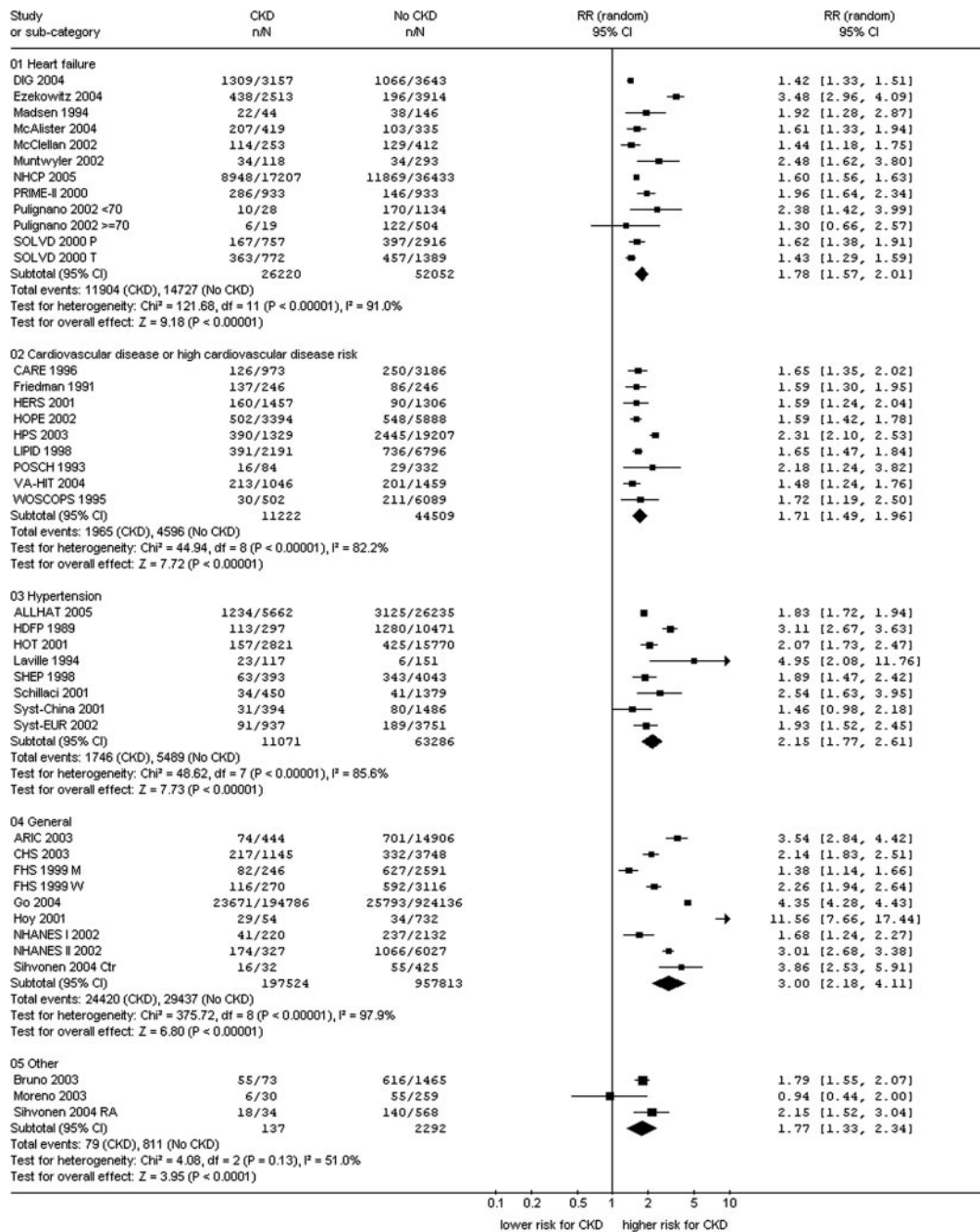


Figure 2. All-cause mortality in chronic kidney disease (CKD).

though not all studies presented results in this form, we used values as close as possible to these levels of kidney function. Although CrCl is conceptually different from GFR, it is commonly used as an estimate of GFR (6); therefore, CrCl was used interchangeably with GFR to assess the primary outcome. Similarly, estimates of GFR and/or CrCl that were normalized to body surface area were pooled with those that were not.

**Outcome Measures**

We considered the outcomes of all-cause death and cardiovascular death. For the latter, we used the definitions that were used by the authors of the primary studies; these typically included death from coronary, noncoronary cardiac, and cerebrovascular causes. Overall

summary estimates of the relation between CKD and these outcomes are not presented because of the extensive clinical and methodologic heterogeneity. However, pooled estimates are presented for the clinical subpopulations (heart failure, known cardiovascular disease, hypertension, general population, and other).

**Statistical Analyses**

Because of the differing definitions of kidney function and CKD between studies, we decided to dichotomize kidney function, using a GFR threshold as close as possible to 60 ml/min as mentioned above. We calculated unadjusted risk ratios (RR) from the raw data to facilitate comparisons between studies. These latter results then were pooled using a random-effects model (12). For comparison, we also extracted

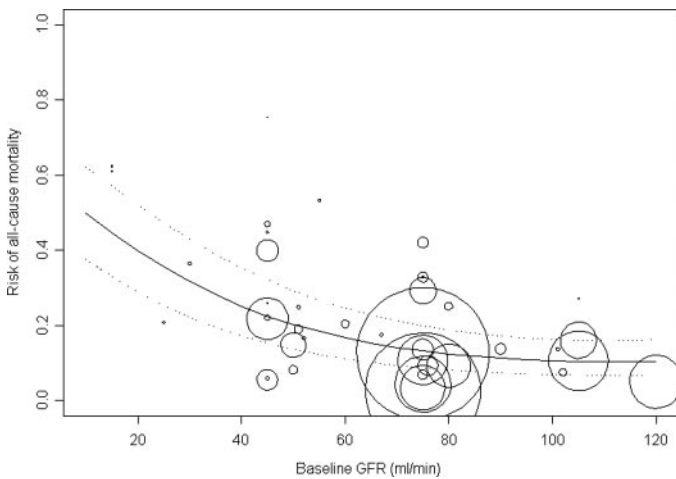


Figure 3. All-cause mortality in CKD by baseline renal function. Risk for all-cause mortality in 42 cohorts according to baseline estimated GFR (ml/min). Risks are expressed as proportions (e.g., 0.6 = 60%). The area of each circle (i.e., data point) is proportional to the sample size of each cohort. The center line models the estimated risk for baseline GFR from the unadjusted analysis. Dotted lines represent the 95% confidence intervals. Median follow-up is 4.9 yr (range 0.8 to 14 yr).

adjusted hazard ratios from Cox regression analyses (which was the analysis that most studies reported) when available. To facilitate comparisons with unadjusted results, we included in our analysis only adjusted hazard ratios that were based on dichotomization of GFR, meaning that we did not report adjusted estimates from studies that categorized GFR into more than two categories (2,13–18) or treated GFR as a continuous variable (19–25). Reasons for diversity in study results were explored using meta-regression. The association between the following factors and outcomes was considered at the study level: mean age; proportion of patients who were female; average duration of follow-up; population (hypertensive, heart failure, cardiovascular disease, or from the general population); proportion of patients who were hypertensive or current smokers or had diabetes or a family history of coronary disease; mean baseline renal function, BP, total cholesterol, body mass index, proteinuria, and C-reactive protein; and medication

use. Medication use, proteinuria, and C-reactive protein were not analyzed further because too few studies reported these data. Methodologic factors (10) (e.g., study design) and the definition of CKD also were explored as potential explanatory variables in meta-regression. For each meta-regression, only studies for which the factor of interest was available were included in the analysis. The models were fit using the step-wise selection method. Statistical heterogeneity was assessed using the  $I^2$  statistic (26,27) and the  $\chi^2$  test for heterogeneity.  $I^2$  is the percentage of variance that is due to between-study variance. A permutation test was applied to all fitted models to guard against spurious findings (28). Publication bias was not assessed because of the extensive statistical heterogeneity, since covariates that lead to heterogeneity of the relation between exposure and outcome also may lead to funnel plot asymmetry (29).

Data from the studies that presented results for subgroups of patients with renal insufficiency (e.g., GFR 30 to 59.9 and 15 to 29.9 ml/min) were included in additional analyses that examined the graded relation between severity of renal dysfunction and mortality. In these analyses, the level of renal dysfunction in each subgroup was categorized by substituting the midpoint of the range for interval data and adding or subtracting 15 ml/min from bounded data. Therefore, in these analyses, each study might contribute one estimate of risk (mortality associated with GFR <60 ml/min) or multiple estimates of risk (mortality associated with 30 to 59.9 and 15 to 29.9 ml/min, respectively). We used a random intercept logistic regression model (30) to control for the possibility of within-study nonindependence, with mortality as the dependent variable and the index of renal function (estimated GFR in ml/min) as the independent variable. Confidence intervals (CI) for the best fit lines were calculated using the parameter estimates and the estimated covariance structure from the fitted model. Statistical analyses were performed with Stata 8.2 (31), S-Plus 7.0 (32), and Review Manager 4.2.7 (33). Statistical significance was set at  $P < 0.05$  for all analyses. This report was structured in accordance with published guidelines (34) and was approved by the institutional review board at the University of Alberta.

## Results

### Study Flow and Characteristics

Our search retrieved 3114 citations. Of these, 232 full-text articles were retrieved, and 39 studies with a total of 1,371,990 patients (2–5,13–25,35–56) met our criteria for review (Table 1).

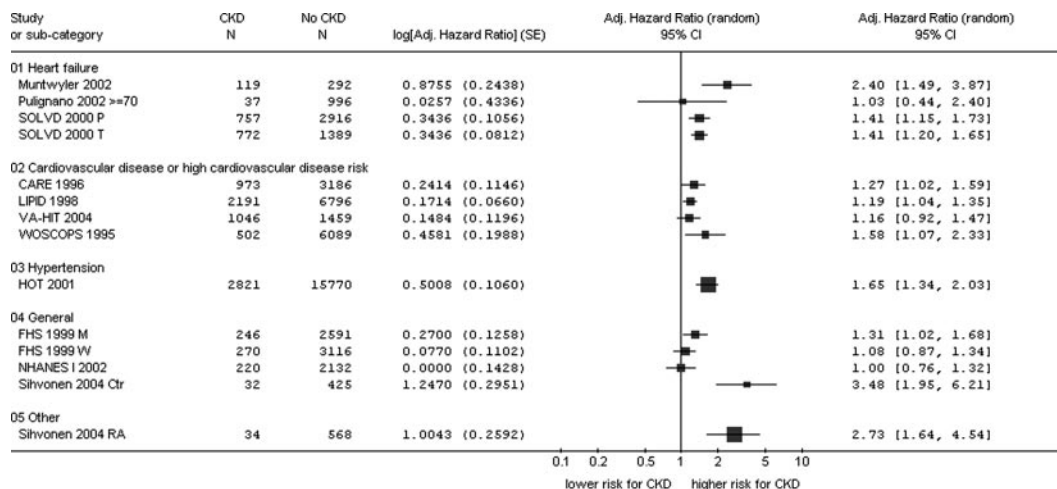


Figure 4. All-cause mortality in CKD using adjusted hazard ratios.

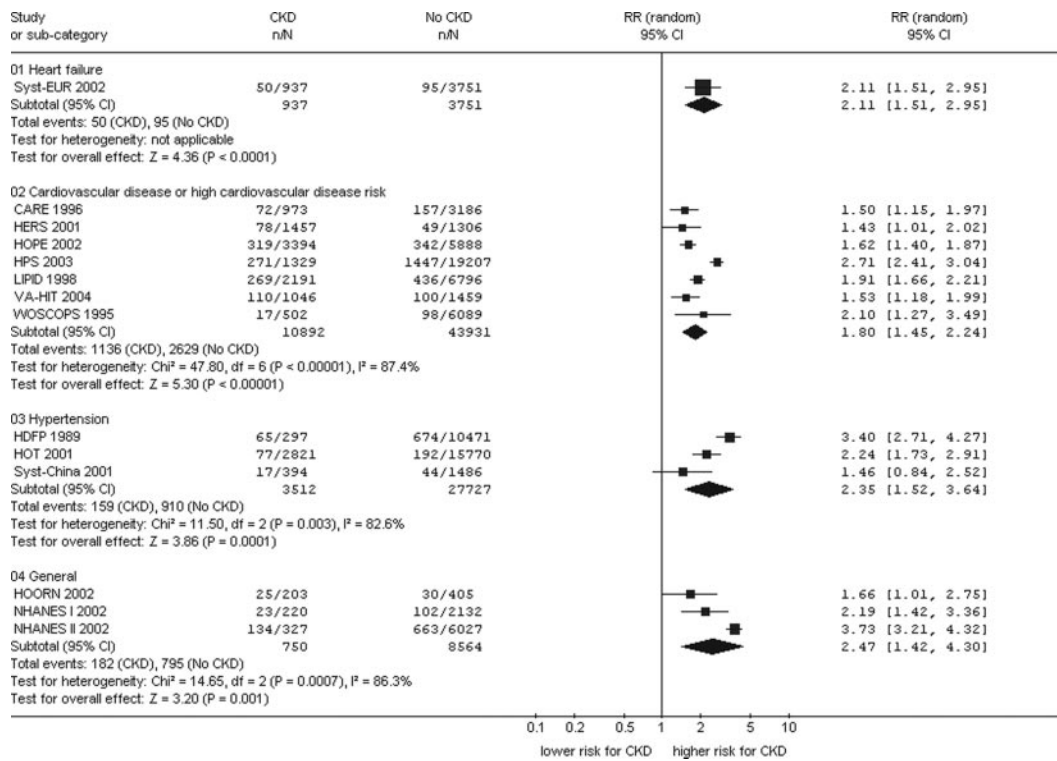


Figure 5. Cardiovascular mortality in CKD.

Reasons for study exclusion are presented in Figure 1: Six studies were duplicate publications, and five studies (57–61) did not report or subsequently provide data in a usable format.

Seventeen of the 39 studies were nested cohort analyses of randomized, controlled trials. Of the remaining 22 cohort studies, seven were retrospective. Details of the 39 studies are outlined in Table 1. The sample selection process and the prognostic variable were described adequately in 100% of the studies. As well, most (97%) described the inclusion and exclusion criteria adequately. Other quality items such as the description of clinical and demographic characteristics, the description of outcomes, and adjustment for important prognostic factors were adequate in 74 to 90% of the studies. In all studies, the definition of CKD seemed to be based on a single measurement of SCr. One study (50) reported re-analyzing the baseline SCr measurement when the value exceeded 5.0 mg/dl, although repeat blood sampling seems not to have been performed. The number of patients who were lost to follow-up was reported in 67% of the studies. Of these, 81% of studies lost <10% of patients during their follow-up. Median follow-up for the included studies was 4.5 yr (range 0.8 to 16).

*Relation between CKD and All-Cause Death*

Forty-one cohorts from 37 studies that included 1,366,126 patients reported or provided all-cause mortality by CKD status. The unadjusted relative risk for mortality in patients with CKD compared with those without CKD ranged from 0.94 to 5.0 and was significantly more than 1.0 in 38 (93%) of 41 cohorts. The I<sup>2</sup> statistic was >99% (Q = 6907, P < 0.001),

indicating statistical heterogeneity between studies, and visual inspection of the forest plots demonstrated qualitative heterogeneity, suggesting that presenting a pooled estimate of the overall risk associated with CKD would be inappropriate. Within clinical subpopulations, statistical heterogeneity remained, but qualitative heterogeneity was much reduced, suggesting that pooling would be informative. Therefore, pooled relative risks in various subpopulations are presented in Figure 2.

We performed additional analyses to determine factors that might partially explain this heterogeneity. Twenty-four variables were explored in meta-regression. In several meta-regression models, studies with the following characteristics tended to find a higher relative risk for mortality associated with CKD: Lower risk patients (younger mean age, higher proportion of women, less hypertension at baseline, and subjects from the general population rather than those with known heart failure or cardiovascular disease), poorer quality studies (retrospective studies, shorter follow-up duration, and studies not reporting loss to follow-up), studies with a representative sample of participants (acceptable external validity), and cohort studies (as opposed to nested cohort analyses of randomized trials). In the final multivariable meta-regression model (31 cohorts), the predicted relative risk for death associated with CKD was significantly higher in retrospective trials, cohorts with younger average participant age, and those in which patients had lower baseline prevalence of known cardiovascular disease (all P < 0.05). Adjustment for these three covariates only marginally reduced I<sup>2</sup> from >99 to 88% (Q statistic reduced from 6787 to 227). All permutation tests were significant, supporting these

Table 2. Quality of included studies<sup>a</sup>

Study	Inclusion and Exclusion Criteria Specified	Sample Selection Explained	Clinical and Demographic Characteristics Fully Described	Representative Sample	Outcomes Fully Defined	Prognostic Variable Fully Defined	Adjustment for All Important Prognostic Factors	No. Lost to Follow-Up Reported	Loss to Follow-Up <10%	Reason for Loss to Follow-Up
ALLHAT 2005 (47)	Y	Y	Y	Y	Y	Y	N	Y	N	Y
ARIC 2003 (42)	Y	Y	Y	Y	N	Y	Y	N	—	—
BRHS 1997 (54)	Y	Y	Y	N	Y	Y	Y	Y	Y	N
Bruno 2003 (36)	Y	Y	Y	Y	Y	Y	N	N	—	—
CARE 1996 (44)	Y	Y	Y	N	Y	Y	N	Y	Y	N
CHS 2003 (15)	Y	Y	Y	Y	Y	Y	Y	N	—	—
DIG 2004 (17)	Y	Y	Y	N	Y	Y	Y	N	—	—
Ezekowitz 2004 (38)	Y	Y	Y	N	Y	Y	Y	N	—	—
FHS 1999 (4)	Y	Y	Y	N	Y	Y	Y	Y	Y	N
Friedman 1991 (39)	Y	Y	N	N	N	Y	Y	Y	Y	N
Go 2004 (2)	Y	Y	Y	Y	Y	Y	Y	N	—	—
HDFP 1989 (50)	Y	Y	Y	N	N	Y	Y	Y	Y	N
HERS 2001 (18)	Y	Y	Y	N	Y	Y	Y	Y	Y	Y
HOORN 2002 (20)	Y	Y	Y	Y	Y	Y	Y	Y	Y	N
HOPE 2001 (20,43)	Y	Y	Y	N	N	Y	Y	Y	Y	N
HOT 2001 (3)	Y	Y	Y	N	Y	Y	Y	Y	Y	Y
Hoy 2001 (14)	Y	Y	Y	Y	Y	Y	N	Y	Y	Y
HPS 2003 (56)	Y	Y	Y	Y	Y	Y	N	Y	Y	N
Laville 1994 (40)	N	Y	N	N	N	Y	N	N	—	—
LIPID 1998 (48)	Y	Y	Y	N	Y	Y	N	Y	Y	N
Madsen 1994 (41)	Y	Y	Y	N	Y	Y	Y	Y	Y	Y
McAlister 2004 (22)	Y	Y	Y	N	Y	Y	Y	N	—	—
McClellan 2002 (23)	Y	Y	Y	N	Y	Y	Y	Y	N	N
Moreno 2003 (35)	Y	Y	N	Y	Y	Y	N	Y	N	N
Muntwyler 2002 (45)	Y	Y	Y	N	Y	Y	Y	N	—	—
NHANES I 2002 (5)	Y	Y	Y	Y	Y	Y	Y	Y	Y	N
NHANES II 2002 (16)	Y	Y	Y	Y	Y	Y	Y	Y	Y	Y
NHCP 2005 (24)	Y	Y	Y	Y	Y	Y	Y	Y	Y	Y
POSCH 1993 (21)	Y	Y	Y	N	Y	Y	Y	Y	Y	Y
PRIME II 2000 (13)	Y	Y	Y	N	N	Y	Y	Y	N	N
Pulignano 2002 (55)	Y	Y	Y	Y	Y	Y	N	Y	Y	Y
Schillaci 2001 (49)	Y	Y	Y	N	Y	Y	Y	N	—	—
SHEP 1998 (46)	Y	Y	Y	N	Y	Y	Y	N	—	—
Sihvonen 2004 (51)	Y	Y	N	N	Y	Y	Y	N	—	—
SOLVD 2000 (37)	Y	Y	Y	N	Y	Y	Y	N	—	—
Syst-China 2001 (25)	Y	Y	Y	Y	Y	Y	Y	Y	Y	N
Syst-EUR 2002 (19)	Y	Y	Y	N	N	Y	Y	Y	Y	N
VA-HIT 2004 (52)	Y	Y	Y	N	Y	Y	Y	Y	Y	Y
WOSCOPS 1995 (53)	Y	Y	Y	N	Y	Y	N	Y	N	N

<sup>a</sup>N, no; Y, yes.

variables as contributors to the heterogeneity in the risk associated with CKD as reported by the primary studies.

To examine the graded relation between severity of CKD and mortality, we calculated multiple risks per study for various severities of renal dysfunction (expressed as the frequency of death within each stratum of renal dysfunction). Sixteen prospective studies stratified results by estimated GFR at baseline and so were available for this analysis. We found an exponential relation between the severity of renal dysfunction and the risk for all-cause mortality (Figure 3). For example, the predicted risk for death during the median follow-up of 4.9 yr was 12% (95% CI 8 to 19) when CKD was defined as estimated GFR = 80 ml/min, 17% (95% CI 11 to 25) for GFR = 60 ml/min, and 25% (95% CI 17 to 35) for GFR = 40 ml/min. Phrased in relative terms, the estimated relative odds for death associated with GFR of 80, 60, and 40 ml/min were 1.9, 2.6, and 4.4, respectively (all compared with a GFR of 100 ml/min).

Twenty-six analyses (from 23 studies) performed and reported Cox regression models using kidney function as an independent variable and all-cause mortality as the dependent

variable, adjusted for potential confounders. In total, >100 different covariates were considered for inclusion in the individual studies. Of these, only four variables (age, BP or hypertension, diabetes, and gender) were considered in at least half of these analyses. The adjusted hazard ratios for 13 of 14 analyses that treated CKD as a dichotomous variable (Figure 4) all were lower in magnitude than the unadjusted relative risks (median reduction 17% lower; range 27% increase to 52% lower), consistent with the observation that CKD frequently coexists with other risk factors for death, such as diabetes and hypertension. Ten of the 14 adjusted estimates were statistically significant.

#### Relation between CKD and Cardiovascular Death

Fourteen studies that included a total of 100,064 participants reported cardiovascular mortality. The unadjusted relative risk for mortality was qualitatively increased in patients with renal insufficiency and ranged from 1.4 to 3.7 (Figure 5). There was substantial heterogeneity between the studies; results were not mathematically pooled ( $Q = 127$ ,  $P < 0.001$ ;  $I^2$  90%). Meta-

regression found that the risk associated with CKD was significantly higher in cohorts with lower mean age. After adjustment for mean age, we found that  $I^2$  reduced from 91 to 74% (Q reduced from 127 to 43, all  $P < 0.001$ ), and the permutation test was statistically significant. No further covariates were statistically significant. Using a mean age of 50 yr, our model predicted a relative risk of 3.4 (95% CI 2.1 to 5.5) with renal insufficiency, whereas with a mean age of 70 yr, the relative risk was 1.5 (95% CI 0.96 to 2.3). Five of the seven adjusted hazard ratios for cardiovascular mortality were statistically significant. Four of five adjusted estimates were lower in magnitude than the unadjusted relative risks (median reduction 20% lower; range 13% increase to 29% lower).

## Discussion

To our knowledge, this is the first systematic review to examine the relation between non-dialysis-dependent CKD and mortality in multiple patient populations. The point estimate for the unadjusted relative risk for all-cause death associated with CKD exceeded 1.0 for 40 of 41 cohorts and was statistically significant in 38 (93%) of 41. The absolute risk for death increased exponentially with decreasing renal function in these studies. The magnitude of the unadjusted increase in risk ranged from approximately 38% to >1100%, reflecting considerable between-study heterogeneity. However it is important to emphasize that this heterogeneity was quantitative, not qualitative. Therefore, although the point estimates varied across studies, CKD was associated consistently with increased all-cause and cardiovascular mortality in a wide range of clinical populations. In the 14 studies that adjusted these risks for other patient factors such as diabetes and hypertension, the risks were substantially lower than unadjusted risks. This reflects that CKD often coexists with other factors that are associated with adverse outcomes. The increased risk for all-cause mortality largely was driven by cardiovascular deaths, which constituted 58% of the deaths in the 13 studies that reported both cardiovascular and all-cause deaths.

The magnitude of the increased risk associated with CKD was greater with more advanced kidney dysfunction, suggesting that different definitions of CKD between studies may have explained some of the observed heterogeneity. Although differences in comorbidities between studies did not seem to explain all the variation in the quantitative estimates of increased risk associated with CKD, this conclusion should be interpreted with caution given that most studies did not account for all potential confounders. Multivariable meta-regression suggested that the relative risk for death associated with CKD was significantly higher in lower risk populations, such as those with younger participants or with a lower prevalence of cardiovascular disease. These findings contrast with previous suggestions that the risk as a result of CKD might be limited to those with preexisting vascular disease (62) but are consistent with data from the United States Renal Data System indicating that the relative risk for cardiovascular death in dialysis patients (*versus* the general population) is greater in younger patients (1). From a population health perspective, this might

suggest that screening for CKD should focus on younger, healthier populations to maximize the impact of preventive strategies. Unfortunately, this benefit would need to be balanced against the much lower likelihood of detecting CKD in such populations.

Although the mechanisms by which CKD might mediate increased risk for death is unknown, there are several possibilities. First, CKD often coexists with other cardiovascular risk factors, including dyslipidemia, hypertension, smoking, and diabetes (63), and these risk factors are associated with substantial increases in absolute risk in the general population (64–67). Second, patients with evidence of renal disease are less likely to receive proven efficacious therapies (23,68–70). In addition, it is possible that therapies that are proved to be efficacious in trials with few CKD patients might be less efficacious or more toxic in the setting of CKD. Third, impaired kidney function may be a marker merely for severity of vascular disease, including atherosclerosis that is not yet clinically evident (62,71). Finally, impaired kidney function is associated with markers of inflammation and other putative risk factors for cardiovascular events (72–75), which might contribute directly to adverse outcomes.

As with all systematic reviews, the strength of our conclusions is influenced by the quality of the constituent studies, and analysis of aggregate (study-level) data may have concealed subgroup effects that would have been apparent if subject-level data were available. We assessed study quality using a standard instrument with 10 domains (10) and found that between 67 and 100% of studies met at least eight of the 10 quality criteria. Most studies were not conducted in a sample that was broadly representative of the population that they sought to investigate, and only a minority reported reasons for losses to follow-up. Because our primary interest was in CKD, we excluded results from studies in which acute renal failure seemed likely, such as those that were conducted in participants with acute coronary syndromes. However, all studies in this report defined CKD on the basis of a single measurement of kidney function; therefore, some individuals may have been misclassified with respect to CKD status. This suggests that the true relation between CKD and death is stronger than that suggested by our results (because misclassification would bias our results toward the null for finding any association [76]). Future studies should classify individuals on the basis of multiple measurements of kidney function, preferably with temporal separation to confirm chronicity. In addition, it is plausible that more rapid rates of kidney function loss are associated with adverse outcomes, and future studies should test this hypothesis. Finally, because proteinuria is strongly associated with the risk for cardiovascular events (a relation that is independent of reduced GFR) (77), future studies should report the association between CKD and risk in strata that are defined by urinary protein excretion.

## Conclusion

Non-dialysis-dependent CKD was associated with an increased risk for all-cause and cardiovascular death in the majority of studies. This finding remained after within-study ad-

## Appendix A: Search strategy (MEDLINE)

	Search History	Results
1	exp Cardiovascular Diseases/	1,167,638
2	(cardiovascular\$ or vascular or atherosclero\$ or arteriosclero\$ or myocardial infarct\$ or cardiol\$ or heart).mp. [mp = title, original title, abstract, name of substance word, subject heading word]	1,104,530
3	exp Kidney Failure/	74,591
4	(renal insufficiency or kidney insufficiency or renal failure or kidney failure or end stage renal disease\$) .mp. [mp = title, original title, abstract, name of substance word, subject heading word]	97,363
5	1 or 2	164,8661
6	3 or 4	98,483
7	5 and 6	27,021
8	mo.fs. or mortality.mp. [mp = title, original title, abstract, name of substance word, subject heading word]	386,461
9	exp MORTALITY/	149,421
10	exp Survival Analysis/	58,242
11	exp Survival Rate/	65,541
12	(death or survival).mp. [mp = title, original title, abstract, name of substance word, subject heading word]	587,797
13	8 or 9 or 10 or 11 or 12	820,886
14	7 and 13	7404
15	exp RISK MANAGEMENT/ or exp RISK ASSESSMENT/ or exp RISK ADJUSTMENT/ or exp RISK/ or exp RISK FACTORS/	392,263
16	exp Cohort Studies/	515,876
17	exp Case-Control Studies/	273,245
18	exp Odds Ratio/	22,039
19	15 or 16 or 17 or 18	1,026,517
20	14 and 19	3571
21	from 20 keep 4, 7, 14, 26, 29	5
22	6 and 13 and 19	6874
23	22 not 20	3303
24	from 23 keep 20, 35, 45	3
25	limit 23 to all adult <19 plus years>	2424
26	limit 25 to yr = 1902-2004	2424

justment for potential confounders and was consistent across studies despite variations in design, study populations, event rates in control subjects, and definitions of CKD. This review supports current guidelines that identify individuals with CKD as being at high risk for cardiovascular disease and other adverse outcomes and supports calls for more intensive intervention in patients with CKD to prevent adverse outcomes (78). Therapeutic strategies that have been shown to prevent cardiovascular events in patients with CKD include aggressive BP control, statins, and angiotensin-converting enzyme inhibitors/angiotensin receptor blockers (79). The first step in addressing any care gap is identifying and quantifying the magnitude of the problem; our systematic review achieves this goal by highlighting the consistency of the evidence about the hazards that are associated with CKD. The challenge that clinicians now face is to search for CKD and manage it aggressively. The challenge that researchers now face is to evaluate novel means of detect-

ing CKD (80) and to expand the therapeutic armamentarium for patients with CKD.

## Acknowledgments

This study was supported by the Alberta Kidney Disease Network. M.T. and F.M. were supported by Population Health Investigator Awards from the Alberta Heritage Foundation for Medical Research and New Investigator Awards from the Canadian Institutes for Health Research. M.F. was supported by a summer studentship from the Canadian Institutes for Health Research. A.X.G. was supported by a Clinician Scientist Award from the Canadian Institutes for Health Research.

We thank the following authors for sending us additional data: Graziella Bruno, Rory Collins, Justin Ezekowitz, Alan Go, Jose Marie Moreno Planas, Giovanni Pulignano, Jorg Muntwyler, Giuseppe Schil-laci, Michael Shlipak, and Susanna Sihvonen. We also thank Kris Cramer for data checking and Alex Stewart and Julie Paterson for text retrieval.

## Appendix B: Search strategy (EMBASE)

	Search History	Results
1	exp Cardiovascular Disease/	797,454
2	(cardiovascular\$ or vascular\$ or atherosclero\$ or arteriosclero\$ or myocardial infarct\$ or cardiol\$ or heart\$).mp. [mp = title, abstract, subject headings, drug trade name, original title, device manufacturer, drug manufacturer name]	711,108
3	1 or 2	1,061,416
4	exp Kidney Failure/	58,825
5	(renal insufficiency or kidney insufficiency or renal failure or kidney failure or end stage renal disease\$).mp. [mp = title, abstract, subject headings, drug trade name, original title, device manufacturer, drug manufacturer name]	57,362
6	4 or 5	68,673
7	3 and 6	27,456
8	mo.fs. or mortality.mp. [mp = title, abstract, subject headings, drug trade name, original title, device manufacturer, drug manufacturer name]	179,180
9	exp MORTALITY/	135,492
10	exp Survival/	140,477
11	survival rate/	32,199
12	(death\$ or survival).mp. [mp = title, abstract, subject headings, drug trade name, original title, device manufacturer, drug manufacturer name]	363,754
13	8 or 9 or 10 or 11 or 12	515,018
14	7 and 13	8218
15	exp risk/	327,551
16	exp cohort analysis/	24,856
17	exp Case Control Study/	11,012
18	15 or 16 or 17	349,352
19	18 and 14	2602
20	6 and 18 and 13	3588
21	20 not 19	986
22	limit 21 to yr = 1982–2004	970

## References

- Foley RN, Parfrey PS, Sarnak MJ: Clinical epidemiology of cardiovascular disease in chronic renal disease. *Am J Kidney Dis* 32[Suppl 3]: S112–S119, 1998
- Go AS, Chertow GM, Fan Donjie, McCulloch CE, Hsu C: Chronic kidney disease and the risks of death, cardiovascular events, and hospitalization. *N Engl J Med* 351: 1296–1305, 2004
- Ruilope L, Antonio S, Jamerson K, Hansson L, Warnold I, Wedel H, Zanchetti A: Renal function and intensive lowering of blood pressure in hypertensive participants of the hypertension optimal treatment (HOT) Study. *J Am Soc Nephrol* 12: 218–225, 2001
- Culleton BF, Larson MG, Wilson PWF, Evan JC, Parfrey PS, Levy D: Cardiovascular disease and morality in a community-based cohort with mild renal insufficiency. *Kidney Int* 56: 2214–2219, 1999
- Garg AX, Clark WF, Haynes B, House AA: Moderate renal insufficiency and the risk of cardiovascular mortality: Results from the NHANES I. *Kidney Int* 61: 1486–1494, 2002
- National Kidney Foundation: K/DOQI clinical practice guidelines for chronic kidney disease: Evaluation, classification, and stratification. *Am J Kidney Dis* 39: S76–S110, 2002
- Coresh J, Astor B, Greene T, Eknoyan G, Levey AS: Prevalence of kidney disease and decreased kidney function in the adult US population: Third National Health and Nutrition Examination Survey. *Am J Kidney Dis* 41: 1–12, 2003
- Mulrow CD: The medical review article: State of the science. *Ann Intern Med* 106: 485–488, 1987
- Teagarden JR: Meta-analysis: Whither narrative review? *Pharmacotherapy* 9: 274–281; discussion 281–284, 1989
- Altman DG: Systematic review of evaluations of prognostic variables. In: *Systematic Reviews in Health Care*, edited by Egger M, Davey Smith G, Altman DG, London, BMJ Books, 2001, pp 228–247
- Hennekens CH, Buring JE: Cohort studies. In: *Epidemiology in Medicine*, Toronto, Little, Brown, and Co., 1987, pp 153–177
- DerSimonian R, Laird N: Meta-analysis in clinical trials. *Control Clin Trials* 7: 177–188, 1986
- Hillege HL, Girbes A, Kam P, Boonsma F, Zeeuw D, Charlesworth A, Hampton, Veldhuisen D: Renal function, neurohormonal activation, and survival in patients with chronic heart failure. *Circulation* 102: 203–210, 2000
- Hoy WE, Wang Z, VanBuynder P, Baker PR, Mathews JD: The natural history of renal disease in Australian Aborig-

- ines. Part 1. Changes in albuminuria and glomerular filtration rate over time. *Kidney Int* 60: 243–248, 2001
15. Manjunath G, Tighiouart H, Coresh J, Macleod B, Salem D, Griffith J, Levey A, Sarnak M: Level of kidney function as a risk factor for cardiovascular outcomes in the elderly. *Kidney Int* 63: 1121–1129, 2003
  16. Muntner P, He J, Hamm L, Loria C, Whelton P: Renal insufficiency and subsequent death resulting from cardiovascular disease in the United States. *J Am Soc Nephrol* 13: 745–753, 2002
  17. Shlipak MG, Smith GL, Rathore SS, Massie BM, Krumholz HM: Renal function, digoxin therapy, and heart failure outcomes: Evidence from the digoxin intervention group trial. *J Am Soc Nephrol* 15: 2195–2203, 2004
  18. Shlipak MG, Simon JA, Grady D, Lin F, Wenger NK, Furberg CD; the Heart and Estrogen/Progestin Replacement Study (HERS) Investigators: Renal insufficiency and cardiovascular events in postmenopausal women with coronary heart disease. *J Am Coll Cardiol* 38: 705–711, 2001
  19. De Leeuw PW, Lutogarde T, Birkenhager WH, Voyaki SM, Efstratopoulos AD, Fagard RH, Leonetti G, Nachev C, Petrie JC, Rodicio J, Rosnfeld JJ, Sarti C, Stanessen JA; for the Systolic Hypertension in Europe (Syst-EUR) trial investigators: Prognostic significance of renal function in elderly patients with isolated systolic hypertension: Results from the Syst-EUR trial. *J Am Soc Nephrol* 13: 2213–2222, 2002
  20. Henry R, Kostense PJ, Bos G, Dekker JM, Mijpels G, Heine RJ, Bouter LM, Stehouwer C: Mild renal insufficiency is associated with increased cardiovascular mortality: The HOORN study. *Kidney Int* 62: 1402–1407, 2002
  21. Matts J, Karnegis J, Campos C, Fitch L, Johnson J, Buchwald H; the POSCH Group: Serum creatinine as an independent predictor of coronary heart disease mortality in normotensive survivors of myocardial infarction. *J Fam Pract* 36: 497–503, 1993
  22. McAlister F, Ezekowitz J, Tonelli M, Armstrong P: Renal insufficiency and heart failure prognostic and therapeutic implications from a prospective cohort study. *Circulation* 109: 1004–1009, 2004
  23. McClellan W, Flanders W, Langston R, Jurkovic Z, Presley R: Anemia and renal insufficiency are independent risk factors for death among patients with congestive heart failure admitted to community hospitals: A population-based study. *J Am Soc Nephrol* 13: 1928–1936, 2002
  24. Smith G, Shlipak M, Havranek E, Masoudi F, McClellan W, Foody J, Rathore S, Krumholz H: Race and renal impairment in heart failure: Mortality in blacks versus whites. *Circulation* 111: 1270–1277, 2005
  25. Wang J-G, Staessen JA, Fagard RH, Birkenhager WH, Gong L, Liu L; the Systolic Hypertension in China (Syst-China) Trial Collaborative Group: Prognostic significance of serum creatinine and uric acid in older Chinese patients with isolated systolic hypertension. *Hypertension* 37: 1069–1074, 2001
  26. Higgins JPT, Thompson SG, Deeks JJ, Altman DG: Measuring inconsistency in meta-analyses. *BMJ* 327: 557–560, 2003
  27. Higgins JPT, Thompson SG: Quantifying heterogeneity in a meta-analysis. *Stat Med* 21: 1538–1558, 2002
  28. Higgins JPT, Thompson SG: Controlling the risk of spurious findings from meta-regression. *Stat Med* 23: 1663–1682, 2004
  29. Egger M, Davey Smith G, Schneider M, Minder C: Bias in meta-analysis detected by a simple, graphical test. *BMJ* 315: 629–634, 1997
  30. McCulloch CE, Searle SR (eds): Generalized linear mixed models. In: *Generalized, Linear, and Mixed Models*, Toronto, John Wiley & Sons, Inc., 2001, pp 220–246
  31. Stata Special Edition, College Station, TX, Stata Corp., 2004
  32. S-Plus Enterprise Developer, Seattle, Insightful Corp., 2005
  33. Review Manager (RevMan), Oxford, The Cochrane Collaboration, 2004
  34. Stroup DF, Berlin JA, Morton SC, Olkin I, Williamson GD, Rennie D, Moher D, Becker BJ, Sipe TA, Thacker SB; the Meta-Analysis of Observational Studies in Epidemiology (MOOSE) Group: Meta-analysis of observational studies in epidemiology: A proposal for reporting. *JAMA* 283: 2008–2012, 2000
  35. Moreno JM, Cuervas-Mons V, Rubio E, Pons F, De Herberos AT, Turrion VS, Millan I: Chronic renal dysfunction after liver transplantation in adult patients: Prevalence, risk factors, and impact on mortality. *Transplant Proc* 35: 1907–1908, 2003
  36. Bruno G, Biggeri A, Merletti F, Bargero G, Ferrero S, Paganò G, Paolo PC: Low incidence of end stage renal disease and chronic renal failure in type 2 diabetes. *Diabetes Care* 26: 2353–2358, 2003
  37. Dries DL, Exner DV, Domanski MJ, Greenberg B, Stevenson LW: The prognostic implications of renal insufficiency in asymptomatic and symptomatic patients with left ventricular systolic dysfunction. *J Am Coll Cardiol* 35: 681–689, 2000
  38. Ezekowitz J, McAlister FA, Humphries KH, Norris CM, Tonelli M, Ghali WA, Knudston ML: The association among renal insufficiency, pharmacotherapy, and outcomes in 6,247 patients with heart failure and coronary artery disease. *J Am Coll Cardiol* 44: 1587–1592, 2004
  39. Friedman PJ: Serum creatinine: An independent predictor of survival after stroke. *J Intern Med* 229: 175–179, 1991
  40. Laville M, Lengani A, Serme D, Fauvel J, Ouandaogo B, Zech P: Epidemiological profile of hypertensive disease and renal risk factors in black Africa. *J Hypertens* 12: 839–843, 1994
  41. Madsen BK, Hansen JF, Stokholm KH, Brons J, Husum D, Mortensen LS: Chronic congestive heart failure: Description and survival of 190 consecutive patients with diagnosis of chronic congestive heart failure based on clinical signs and symptoms. *Eur Heart J* 15: 303–310, 1994
  42. Manjunath G, Tighiouart H, Ibrahim H, Macleod B, Salem D, Griffith J, Coresh J, Levey A, Sarnak M: Level of kidney function as a risk factor for atherosclerotic cardiovascular outcomes in the community. *J Am Coll Cardiol* 41: 48–55, 2003
  43. Mann J, Gerstein H, Pogue J, Bosch J, Yusuf S; for the HOPE Investigators: Renal insufficiency as a predictor of cardiovascular outcomes and the impact of ramipril: The HOPE randomized trial. *Ann Intern Med* 134: 629–636, 2001
  44. Sacks FM, Pfeffer MA, Moye LA, Rouleau JL, Rutherford JD, Cole TG, Brown L, Warnica JW, Arnold JMO, Wun C, Davis BR, Braunwald E; the Cholesterol and Recurrent Events Trial Investigators: The effect of pravastatin on coronary events after myocardial infarction in patients with average cholesterol levels. *N Engl J Med* 335: 1001–1009, 1996
  45. Muntwyler J, Abetel G, Gruner C, Follath F: One-year

- mortality among unselected outpatients with heart failure. *Eur Heart J* 23: 1861-1866, 2002
46. Pahor M, Shorr R, Somes G, Cushman W, Ferrucci L, Bailey J, Elam J, Applegate W: Diuretic-based treatment and cardiovascular events in patients with mild renal dysfunction enrolled in the systolic hypertension in the elderly program. *Arch Intern Med* 158: 1340-1345, 1998
  47. Rahman M, Pressel S, Davis, Swachuku C, Wright J, Whelton P, Barzilay J, Batuman V, Eckfeldt J, Farber M, Henriquez M, Kopyt N, Louis G, Saklayen M, Stanford C, Walworth C, Ward H, Wiegmann T; for the ALLHAT Collaborative Research Group: Renal outcomes in high-risk hypertensive patients treated with an angiotensin-converting enzyme inhibitor or a calcium channel blocker vs a diuretic. *Arch Intern Med* 165: 936-976, 2005
  48. The Long-Term Intervention with Pravastatin in Ischaemic Disease (LIPID) Study Group: Prevention of cardiovascular events and death with pravastatin in patients with coronary heart disease and a broad range of initial cholesterol levels. *N Engl J Med* 339: 1349-1357, 1998
  49. Schillaci G, Reboldi G, Verdecchia P: High-normal serum creatinine concentration is a predictor of cardiovascular risk in essential hypertension. *Arch Intern Med* 161: 886-891, 2001
  50. Shulman NB, Ford CE, Hall WD, Blaufowx MD, Simon D, Langford HG, Schnieder KA: Prognostic value of serum creatinine and effect of treatment of hypertension on renal function. The Hypertension Detection and Follow-up Program Cooperative Group. *Hypertension* 13: 1-80-1-93, 1989
  51. Sihvonen S, Korepelaa M, Mustonen J, Laippala P, Pasternack A: Renal disease as a predictor of increased mortality among patients with rheumatoid arthritis. *Nephron* 96: 107-114, 2004
  52. Tonelli M, Collins D, Robins S, Bloomfield H, Curhan G; for the Veterans' Affairs High-Density Lipoprotein Intervention Trial V-Hi: Gemfibrozil for secondary prevention of cardiovascular events in mild to moderate chronic renal insufficiency. *Kidney Int* 66: 1123-1130, 2004
  53. Shepherd J, Cobbe SM, Ford I, Isles CG, Lorimer AR, MacFarlane PW, McKillop JH, Packard CJ; the West Scotland Coronary Prevention Study Group: Prevention of coronary heart disease with pravastatin in men with hypercholesterolemia. *N Engl J Med* 333: 1301-1307, 1995
  54. Wannamethee S, Shaper G, Perry I: Serum creatinine concentration and risk of cardiovascular disease: A possible marker for increased risk of stroke. *Stroke* 28: 557-563, 1997
  55. Pulignano G, del Sindaco D, Tavazzi L, Lucci D, Gorini M, Leggio F, Porcu M, Scherillo M, Opasich C, di Lenarda A, Senni M, Maggioni AP; the IN-CHF Investigators: Clinical features and outcomes of elderly outpatients with heart failure followed up in hospital cardiology units: Data from a large nationwide cardiology database (IN-CHF Registry). *Am Heart J* 43: 45-55, 2002
  56. The Heart Protection Study Collaborative Group: MRC/BHF Heart Protection Study of cholesterol-lowering with simvastatin in 5963 people with diabetes: A randomised placebo-controlled trial. *Lancet* 361: 2005-2016, 2003
  57. Adler AI, Stevens RJ, Manley SE, Bilous RW, Cull CA, Holman RR, UKPDS Group: Development and progression of nephropathy in type 2 diabetes: The United Kingdom Prospective Diabetes Study (UKPDS 64). *Kidney Int* 63: 225-232, 2003
  58. De Leeuw PW, Ruilope LM, Palmer CR, Brown MJ, Castaigne A, Mancia G, Rosenthal T, Wagener G: Clinical significance of renal function in hypertensive patients at high risk: Results from the INSIGHT trial. *Arch Intern Med* 164: 2459-2464, 2004
  59. Pawarode A, Fine DM, Thuluvath PJ: Independent risk factors and natural history of renal dysfunction in liver transplant recipients. *Liver Transpl* 9: 741-747, 2003
  60. Thuluvath PJ, Yoo HY, Thompson RE: A model to predict survival at one month, one year, and five years after liver transplantation based on pretransplant clinical characteristics. *Liver Transpl* 9: 527-532, 2003
  61. Flack JM, Neaton JD, Daniels B, Esunge P: Ethnicity and renal disease: Lessons from the multiple risk factor intervention trial and the treatment of mild hypertension study. *Am J Kidney Dis* 21: 31-40, 1993
  62. Kasiske BL: The kidney in cardiovascular disease. *Ann Intern Med* 134: 707-709, 2001
  63. Hannedouche T, Albouze G, Chauveau P, Lacour B, Jungers P: Effects of blood pressure and antihypertensive treatment on progression of advanced chronic renal failure. *Am J Kidney Dis* 21: 131-137, 1993
  64. Shlipak MG, Fried LF, Cushman M, Manolio TA, Peterson D, Stehman-Breen C, Bleyer A, Newman A, Siscovick D, Psaty B: Cardiovascular mortality risk in chronic kidney disease: Comparison of traditional and novel risk factors. *JAMA* 293: 1737-1745, 2005
  65. Hakim RM, Lazarus JM: Progression of chronic renal failure. *Am J Kidney Dis* 14: 396-401, 1989
  66. Hunsicker LG, Adler S, Caggiula A, England BK, Greene T, Kusek JW, Rogers NL, Teschan PE: Predictors of the progression of renal disease in the Modification of Diet in Renal Disease Study. *Kidney Int* 51: 1908-1919, 1997
  67. Locatelli F, Manzoni C, Marcelli D: Factors affecting progression of renal insufficiency. *Miner Electrolyte Metab* 23: 301-305, 1997
  68. Shlipak MG, Heidenreich PA, Noguchi H, Chertow GM, Browner WS, McClellan MB: Association of renal insufficiency with treatment and outcomes after myocardial infarction in elderly patients. *Ann Intern Med* 137: 555-562, 2002
  69. Tonelli M, Bohm C, Pandeya S, Gill J, Levin A, Kiberd BA: Cardiac risk factors and the use of cardioprotective medications in patients with chronic renal insufficiency. *Am J Kidney Dis* 37: 484-489, 2001
  70. McCullough PA, Sandberg KR, Borzak S, Hudson MP, Garg M, Manley HJ: Benefits of aspirin and beta-blockade after myocardial infarction in patients with chronic kidney disease. *Am Heart J* 144: 226-232, 2002
  71. Clausen P, Jensen JS, Jensen G, Borch-Johnsen K, Feldt-Rasmussen B: Elevated urinary albumin excretion is associated with impaired arterial dilatatory capacity in clinically healthy subjects. *Circulation* 103: 1869-1874, 2001
  72. Garg AX, Blake PG, Clark WF, Clase CM, Haynes RB, Moist LM: Association between renal insufficiency and malnutrition in older adults: Results from the NHANES III. *Kidney Int* 60: 1867-1874, 2001
  73. Stenvinkel P, Wanner C, Metzger T, Heimbürger O, Malamaci F, Tripepi G, Malatino L, Zoccali C: Inflammation and outcome in end-stage renal failure: Does female gender constitute a survival advantage? *Kidney Int* 62: 1791-1798, 2002

74. Stuveling EM, Hillege HL, Bakker SJ, Asselbergs FW, de Jong PE, Gans RO, de Zeeuw D; PREVEND study group: C-reactive protein and microalbuminuria differ in their associations with various domains of vascular disease. *Atherosclerosis* 172: 107–114, 2004
75. Knight EL, Rimm EB, Pai JK, Rexrode KM, Cannuscio CC, Manson JE, Stampfer MJ, Curhan GC: Kidney dysfunction, inflammation, and coronary events: A prospective study. *J Am Soc Nephrol* 15: 1897–1903, 2004
76. Peto R: Two properties of multiple regression analysis, and regression to the mean (and regression from the mean). In: *The Natural History of Chronic Bronchitis and Emphysema. An Eight-Year Study of Early Chronic Obstructive Lung Disease in Working Men in London*, edited by Fletcher CM, Peto R, Tinker CM, Speizer FE, Oxford, Oxford University Press, 1976, pp 218–223
77. Anavekar NS, Gans DJ, Berl T, Rohde RD, Cooper W, Bhaumik A, Hunsicker LG, Rouleau JL, Lewis JB, Rosendorff C, Porush JG, Drury PL, Esmatjes E, Raz I, Vanhille P, Locatelli F, Goldhaber S, Lewis EJ, Pfeffer MA: Predictors of cardiovascular events in patients with type 2 diabetic nephropathy and hypertension: A case for albuminuria. *Kidney Int Suppl* 92: S50–S55, 2004
78. Sarnak MJ, Levey AS, Schoolwerth AC, Coresh J, Culleton B, Hamm LL, McCullough PA, Kasiske BL, Kelepouris E, Klag MJ, Parfrey P, Pfeffer M, Raij L, Spinosa DJ, Wilson PW: Kidney disease as a risk factor for development of cardiovascular disease: A statement from the American Heart Association Councils on Kidney in Cardiovascular Disease, High Blood Pressure Research, Clinical Cardiology, and Epidemiology and Prevention. *Circulation* 108: 2154–2169, 2003
79. Ruilope LM: Renal function and cardiovascular risk in hypertensive patients. *J Hypertens* 23: 1787–1788, 2005
80. Shlipak MG, Sarnak MJ, Katz R, Fried LF, Seliger SL, Newman AB, Siscovick DS, Stehman-Breen C: Cystatin C and the risk of death and cardiovascular events among elderly persons. *N Engl J Med* 352: 2049–2060, 2005